



ATKINS

Member of the SNC-Lavalin Group



Welcome!

Welcome to the second issue of the East West Rail Phase 2 (EWR2) project newsletter which contains updates on recent progress and outlines forthcoming activities on the project. On behalf of the East West Rail Alliance, I wish you well during these challenging times with the coronavirus pandemic and hope that you are all keeping safe.

Since our last newsletter in April 2020, the Alliance has continued the site preparations for the delivery of the EWR2 project. As an essential infrastructure project, site operations on EWR2 have continued through the coronavirus pandemic with workers and supervisory staff continuing to attend site while support staff work from home. The Alliance commitment to reduce the project construction duration and therefore minimise disruption to the community remains very strong. By continuing to work through the coronavirus pandemic we are safeguarding the project completion date and working to make the new railway infrastructure available to the public at the earliest possible date.

I would like to thank everyone in the community for their tolerance and understanding during the implementation of our works. In particular, we appreciate that the closure of local footpaths and roads does impact the everyday lives of people in the community and that this impact is exaggerated by the additional strains imposed by the coronavirus pandemic. Please rest assured that we are making every effort to minimise the disruption while also responding to the feedback we receive from our community stakeholders.

Recognising the significant challenge posed by the coronavirus pandemic on local government, I would like to thank all our colleagues in the local planning authorities, councils and statutory bodies who have been working closely with the project team to keep the required planning applications and approvals on track.

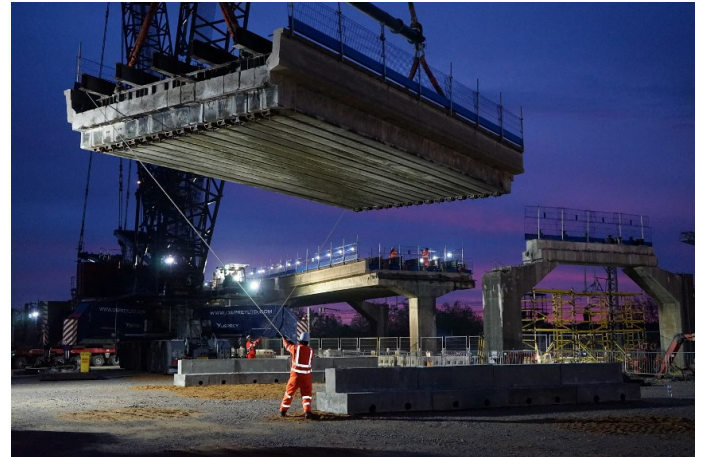
As part of our response to the feedback received on the works undertaken so far, we have significantly increased the amount of information in our project newsletter and organised the content into sections to enable a better understanding of what is happening in each area of the project.

If you have any feedback or suggestions for the newsletter, please use the email publicinformation@ewralliance.co.uk

Kind regards

Mark Cuzner, EWR Alliance Director

Bletchley Flyover upgrade underway



As reported in the first issue of our newsletter, a key element of the EWR Phase 2 project is the upgrade of the Bletchley Flyover. To bring the flyover up to modern standards and ensure it is structurally sound for the next 60 years we will need to dismantle and rebuild the flyover.

Since our last newsletter in April, the team has successfully lifted three of the 17 concrete decks (spans) that need to be removed from the flyover, including one deck which was previously located above the West Coast Main Line itself. These significant lifts were carried out using one of the largest "mobile" cranes in the country and took place whilst the railway was closed in order to maintain the safety and integrity of the railway.

The team are now preparing for the removal of the next set of decks from the flyover. These decks span over the West Coast Main Line and Buckingham Road, and so the complex lifts need to be carefully coordinated and meticulously planned.

The lifts will take place throughout July and August, and will be carried out with the help three cranes, including the AK 680-3, the largest mobile crane in the country with a lifting capacity of 1,200 tonnes.

To allow us to safely remove the decks that span over Buckingham Road, it has been necessary to close the road to all vehicles. The closure came into operation on Sunday 5 July and will be in place until Thursday 30 August.

A protected walkway has been provided through the worksite so pedestrians can still get access from one side of Buckingham Road to the other for the majority of the work. However, if and when pedestrian access cannot be maintained a shuttle bus will operate between the train station and the bus station, every 15 minutes.

Early works underway as construction sites begin to take shape



One of our Environmental Compensation Sites



Site clearance in the Winslow Cutting



One of the 'haul roads' we are constructing to reduce the amount of construction traffic on local roads.

In addition to our works at Bletchley, the Alliance has been busy carrying out works to enable us to set up our construction sites and compounds required for the project.

The team has been making good progress, working collaboratively with local authorities and statutory bodies to ensure all the permissions and licences are in place for the required works.

We have continued the construction of all of our Environmental Compensation Sites, designed to offset the environmental impact the project will have. So far we have finished 12 of the 19 sites we're due to construct. We are underway with three further sites and the remaining four will all be complete within the next 12 months. As part of this process, we have now completed the construction of all of our artificial badger setts, and we're delighted to report that we have footage of them being used, including video showing a mother badger nursing a baby cub at one of the setts.

We have now served notice on the majority of the temporary and permanent land required for this phase, and in late May/early June, began the process of erecting hoardings and boundary fencing to mark out the various plots of land needed for our construction activity. This will help us keep our construction sites safe and secure.

In addition, as confirmed in our last newsletter, we have been carrying out vegetation clearance works to remove trees and areas of scrub which have established along the embankments of the mothballed section of the old Varsity Line and recently closed sections of the railway. These works have been conducted under a licence granted by Natural England.

We have continued to prepare for the construction of a number of our compounds, including our Bicester site. Before the compound can be established, we have needed to undertake archaeological works to ensure there are no archaeologically significant artefacts in the area. As various sections of the site have been handed back to us by our archaeological specialists, we have been back filling the land to facilitate the construction of the compound.

Finally, we have started the construction of a number of haul roads and are making road improvements to ensure that our construction vehicles can safely access our sites with as little disruption to local traffic as possible.

Footpath Closures



As part of the project, we have already needed to close a number of footpaths/bridleways along the old 'varsity' railway line between Bicester and Bletchley. We are aware that with current covid-19 measures in place, these footpaths were being used more frequently.

The footpaths which crossover and run alongside the railway have always been part of our plans, and the proposals for their closures were included in the various consultation phases and presentations which the Network Rail and EWR Alliance has made to communities along the route.

There will be a great deal of construction work taking place to reinstate the railway, including sections of 'haul roads' which will be used by HGVs and large construction vehicles - making it dangerous to allow members of the public to use the footpaths.

We recognise that this is inconvenient and have received feedback from local people on the closure length and signage. We've taken on board comments and are improving the signage and are reviewing plans so we can re-open the footpaths as soon as work is completed and it is safe to do so.

Alliance recognised for 'excellent' sustainable approach to design

As an Alliance, we have committed to delivering lasting environmental, social and economic benefit through the project. "Sustainability in Every Choice" is a core principle of the Alliance, which everyone who works on the project contributes towards.

To demonstrate our commitment and to track our progress, we have registered with CEEQUAL - an internationally recognised evidence-based sustainability assessment, rating and awards scheme for civil engineering and infrastructure projects. We have entered the "Whole Project Award", which assesses everything from the early sustainability strategy decisions made by the client and how these requirements are embedded into the project from design through to construction and beyond.

We are delighted to report that project has been rated as 'Excellent' as part of CEEQUAL's interim assessment, which focuses on the decisions made during the design stage.

Sustainability & Environment Lead for the Alliance, Ruth Voigt said: "Excellent is the highest rating available on CEEQUAL scheme, so we're thrilled that our approach has been recognised with this accolade. It demonstrates that sustainability has been a key component of our design strategy for the project and that stands us in good stead to deliver a truly sustainable project. Our focus is now on delivering against that strategy and gathering all the evidence we need for our final assessment at the end of the construction phase."

How can we help?

The Alliance is fully committed to leaving a lasting legacy in the communities we serve. We have already undertaken various community engagement projects including painting signage and fencing in Calvert Green, transforming outdoor spaces at Winslow and Wescott schools, as well as installing a new patio and refurbishing the club house at Waddesdon Cricket Club.

We also engage with many schools and colleges in the area. We can come in to talk about the project, promote career paths in rail, construction and engineering and our team of STEM (Science, Technology, Engineering and Maths) ambassadors are trained to deliver engaging activities for primary and secondary school pupils.

Unfortunately, many of the plans we had for this year have been impacted by the coronavirus pandemic, however we are working with local stakeholders and community groups to see if there are activities we can help with during lockdown, and what we can do as lockdown measures continue to ease.

Some of our plans include:

- Working with local charity Bucks Impact to carrying out gardening for the elderly and vulnerable across Buckinghamshire
- Working Buckinghamshire County Council on a clear up of the popular local walking/cycle path between Waddesdon Green and Berryfields
- Working with local schools to deliver STEM sessions to their pupils online via Microsoft Teams

Naturally, each of these activities will only be carried out in accordance with the latest social distancing guidelines.

If you have any projects we may be able to help with, please get in touch with us at publicinformation@ewralliance.co.uk

Alliance scores 45/50 in first CCS assessment



In addition to CEEQUAL assessing our sustainable approach to the project, the Alliance has registered its Bletchley site with the Considerate Contractor's Scheme (CCS), a not-for-profit, independent organisation endorsed by local authorities and government to raise standards in the construction industry by working with sites to share best practice and assess their approach to engaging with the public, our workforce and caring for the environment.

Monitors assess our performance against a set of criteria via a series of visits and audits, with the very highest performing registered sites considered for National Site Awards.

The Bletchley site had its first assessment in early July and we're delighted to report that the project scored 45/50 and achieved an 'exceptional' rating in each of the five areas that are assessed. Achieving such a high rating sets a high standard that we will aim to maintain and seek to improve as and when we register our additional sites across the project.

In the meantime, if you would like to find out more about the CCS scheme, please visit: <https://www.ccscheme.org.uk/>



Upcoming work in your area – Winslow & Swanbourne

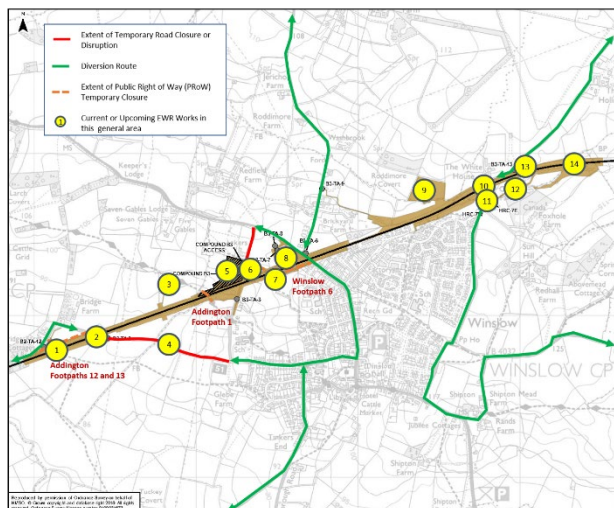
1. Cattle Arch Underbridge repairs

Description: We will refurbish the existing bridge. Work will include new waterproofing, brickwork repairs, installing new parapets, deck repairs and new handrails.

Duration: Work started in spring 2020 with site clearance and construction of scaffolding. Work will continue until spring 2021.

Disruption: The footpath under the bridge will be closed for the duration of the work.

Upcoming Activity: We will start brickwork repairs in summer 2020 followed by deck waterproofing towards the end of the summer.



Duration: The work will start in autumn 2020 with site clearance and construction of scaffolding. The work is due for completion in the summer of 2021.

Disruption: The footpath under the bridge will be closed for the duration of the repair works.

Upcoming Activity: Site clearance and construction preparation works will begin in autumn 2020.

4. Highways improvements - passing bays and junction improvements

Description: We will carry out junction improvements and road widening to allow construction traffic to keep to the agreed construction traffic routes on main roads and minimise traffic using local public roads.

Duration: The improvement works will begin in summer 2020 and are due for completion in late autumn/early winter 2020.

Disruption: There will be partial road closures in place during the construction works. These will be publicised on [one.network](#) and appropriate signage will be displayed in advance of the closures.

Upcoming Activity: Partial road closures for the construction of new road widening works will begin in summer 2020.

5. Furze Lane, Winslow Compound construction

Description: We will build a compound to provide site offices, staff welfare and material storage for the duration of our construction works in the area. This compound will also provide an access route to the new railway construction site to minimise the amount of construction vehicles using local roads.

Duration: The construction of the compound is underway and once complete it will be used until our construction activities have finished in the summer of 2022. The land where the compound lies will then be re-instated to its former condition.

Disruption: There will be partial and full road closures of Furze Lane as the compound access route is constructed. There will also be increased construction traffic using the compound for the duration of the works.

Upcoming Activity: We are carrying our utility protection works and preparing the ground for the construction of the compound to begin.

6. Furze Lane, Winslow Compound access and highway improvement

Description: A new access road off Furze Lane into the new compound will be constructed. We will also be carrying out road widening works along Furze Lane from the junction with Buckingham Road.

Duration: The access and improvements work began in June 2020 and are due for completion later in the summer.

Disruption: Roadworks will remain in place whilst the works are completed and there will be partial road closures of Furze Lane throughout the highway improvements in the summer of 2020. All closures will be publicised on [one.network](#) and appropriate signage will be displayed.

Upcoming Activity: The existing roadworks underway on Furze Lane will continue until later in the summer.

7. Furze Lane Bridge

Description: We will upgrade the existing Furze Lane bridge so that it can support the new railway. Works will include brickwork repairs and deck

More Information

This newsletter has been published as a summary of works in the Winslow & Swanbourne area. If you would like more information on the entire East West Rail Phase Two project, scan the QR Code opposite to read our project-wide newsletter.



2. Verney Road underbridge repairs

Description: We are strengthening and upgrading the existing bridge to support the new railway. Work will include brickwork repairs, installing new parapets, handrails, walkways and deck waterproofing.

Duration: Site clearance was completed in spring this year, and construction will start in the summer. The repair works are due for completion in Spring 2021.

Disruption: From summer until late 2020 there will be several road closures and/or traffic management in place on Verney Road. All closures will be published on [one.network](#) and appropriate signage displayed.

Upcoming Activity: Scaffolding will be erected in summer 2020 to facilitate the start of the repair work.

3. Sandhill Road overbridge repairs

Description: The existing bridge will be strengthened and upgraded to support the new railway. Work will include brickwork repairs, installing new parapets, handrails and walkway, as well as a deck repair and waterproofing.

waterproofing.

Duration: The upgrade work is due to start in the spring of 2022 and is due for completion in the winter of 2022.

Disruption: There will be several road closures and/or traffic management in place on Furze Lane while the repair work is carried out. All closures will be publicised on [one.network](#) and appropriate signage will be displayed.

Upcoming Activity: These works will not begin until 2022.

8. Winslow Station construction

Description: One of the most significant activities to take place in phase two of East West Rail is the construction of a brand-new station in Winslow, providing access to the new East West Rail line for local residents. The station will include two new platforms which will be located in the cutting of the old railway line. These platforms will be accessed via new lifts and staircases, with a new footbridge providing access over the railway to the platform on the far side of the cutting.

Duration: Construction work will begin in summer 2020 and is due for completion in the Summer of 2023.

Disruption: There will be an increased level of construction traffic along agreed HGV routes in the local area to help aid the construction of the new station. This will be minimised as much as possible by utilising the access point at our compound off Furze Lane, which will provide an access point for vehicles that need to access the low-level works within the railway cutting. The existing footbridge over the cutting will also be closed, to enable its demolition.

Upcoming Activity: Over the summer, a new drainage system will be installed in the cutting to dewater the area where the new platforms will be. In addition, we will be demolishing the existing footbridge and removing its foundations.

9. Environmental Compensation Site - These sites have been established to mitigate our impact on the local ecology. They include the creation of aquatic habitat features like river back waters, grasslands, scrub and woodland with specific species and features for badger, otter, reptiles, great crested newts, bats, butterflies etc.

10. Horwood Road underbridge repairs

Description: The existing Horwood Road underbridge deck will be demolished and replaced with a new bridge to support the new railway.

Duration: We completed some preparation works in April 2020. The next phase will begin in the summer of 2020 and is due for completion in the spring of 2021.

Disruption: A road closure of Little Horwood Road will be required to complete the repair work. The road closure is due to start in late summer/early autumn 2020 and will be in place until early 2021. This road closure will be coordinated with other works in the area to minimise disruption to the local road networks. The closure will be publicised on [one.network](#) and appropriate signage will be displayed.

Upcoming Activity: Over the coming months we will build an access point to enable our teams to get to the bridge and scaffolding will be erected in late summer in preparation of the main works to start when Little Horwood Road is closed.

11. Site access construction

Description: We will build a site access point and ramp to provide access to the railway line for our construction vehicles – reducing the need for these vehicles to use local roads.

Duration: The work will take place over the summer of 2020.

Disruption: There will be partial road closures over the summer of 2020 as the access is constructed. However, once complete this access point will reduce the amount of construction traffic on the local road networks. All closures will be publicised via [one.network](#) and appropriate signage will be displayed.

Upcoming Activity: Construction of the access point will take place over the summer of 2020.

12. Haul Road Construction

Description: We are constructing a new haul road in this area for our construction traffic to use in order to minimise our use of public highways.

Duration: Work began early summer and the haul road will be constructed by late summer 2020.

Disruption: There will be an increase in construction traffic throughout the work to establish the haul road.

Upcoming Activity: Vegetation clearance and road construction will be carried out in summer 2020.

13. Maintenance Access Construction

Description: A permanent maintenance facility will be constructed to provide the new railway operator's maintenance teams access to the new railway equipment once the new line opens.

Duration: Construction will begin in the summer of 2022 and is due for completion in early 2023.

Disruption: There will be partial road closures as the access point is constructed. These closures will be publicised on [one.network](#) and appropriate signage displayed.

Upcoming Activity: There will be no construction activity for this compound until 2022.

14. Horwood Brook underbridge repairs

Description: Horwood Brook crosses under the railway in two locations at railway bridges 'OXD 15' and 'OXD 17'. We will be upgrading both bridges to support the new railway. The upgrades will include bridge strengthening and waterproofing.

Duration: Both bridges will be under repair from the summer of 2020 and works are due for completion in late summer 2021.

Disruption: There will be minimal disruption during these works as access to the bridges is provided via the construction traffic haul roads that we are building away from the public highways to minimise disruption on local roads.

Upcoming Activity: Brickwork repairs will start on bridge OXD 15 in summer 2020. Site clearance and creating an access to bridge OXD 17 will begin in late summer/early autumn 2020.